



Certificate SGSCH-PEFC-COC-050035

The organisation

# Josef Winkelheide GmbH

Bredenbeck 14a  
48308 Senden, Germany

has been assessed and certified as meeting the requirements of the standard

## PEFC - Chain of Custody



PEFC ST 2002:2020 – Chain of Custody of Forest and Tree Based Products – Requirements\* - dated 14/02/2020  
PEFC ST 2001:2020 - PEFC Trademarks Rules – Requirement – dated 14/02/2020  
as amended and published on [www.pefc.org](http://www.pefc.org)

for the products detailed in the scope below

**The scope of registration appears on page 2 of this certificate.**

This certificate is valid from 25 October 2021 until 10 November 2025  
and remains valid subject to satisfactory surveillance audits  
Recertification audit due 90 days prior to expiry date  
Issue 3. Certified since November 2015  
Previous certificate DE15/819942082  
This is a multi-site certification  
Additional site details are listed on subsequent pages.



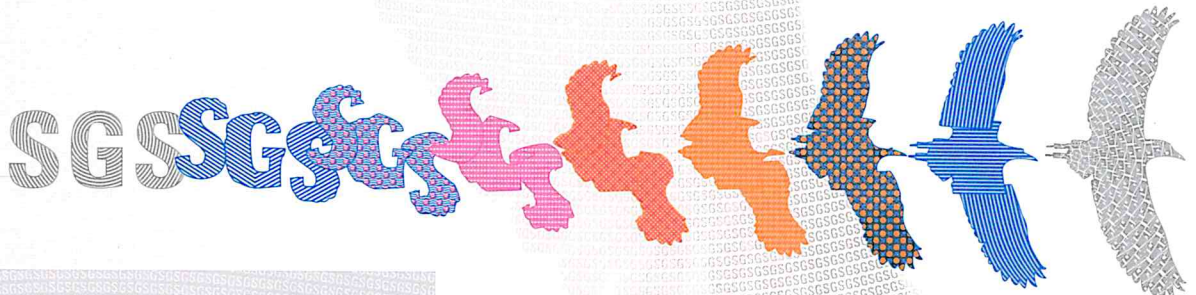
Authorised by

SGS Société Générale de Surveillance SA  
1, place des Alpes, 1211 Geneva, Switzerland  
t +41 (0)22 739-91-11 f +41 (0)22 739-98-86 [www.sgs.com](http://www.sgs.com)



Organisations with a valid PEFC chain of custody certificate can only use the PEFC Logo with unique PEFC license logo number based on PEFC Logo usage license contract issued by the PEFC Council or another entity authorised by the PEFC Council and in accordance with the PEFC logo usage rules.

Page 1 of 2



This document is issued by the Company subject to its General Conditions of Certification Services accessible at [www.sgs.com/terms\\_and\\_conditions.htm](http://www.sgs.com/terms_and_conditions.htm). Attention is drawn to the limitations of liability, indemnification and jurisdictional issues established therein. The authenticity of this document may be verified at <http://www.sgs.com/en/certified-clients-and-products/certified-client-directory>. Any unauthorized alteration, forgery or falsification of the content or appearance of this document is unlawful and offenders may be prosecuted to the fullest extent of the law.

# Josef Winkelheide GmbH

## PEFC - Chain of Custody

Issue 3



This certification includes the following products

**Einkauf von PEFC-zertifizierten Palettenelementen. Entwurf, Konstruktion und Produktion von PEFC-zertifizierten Paletten unter Anwendung der Methode der physischen Trennung.**

**Purchase of PEFC certified elements. Development, construction and production of PEFC certified palettes, using the physical separation method..**

Additional facilities

**Josef Winkelheide GmbH  
Industriestraße 8  
48308 Senden, Germany**



PEFC/15-04-0001

